

Final Diagnosis

E-cigarette or Vaping-use Associated Lung Injury (EVALI)

Vaping Associated Lung Injury

- Emerged in 2019, primarily in young patients
- 80% of cases have involved THC containing E-Cigarettes
- CDC Criteria for Confirmed Case:
 - Vaping within 90 days
 - Bilateral infiltrates
 - Negative evaluation for infection
 - No other alternative plausible diagnoses

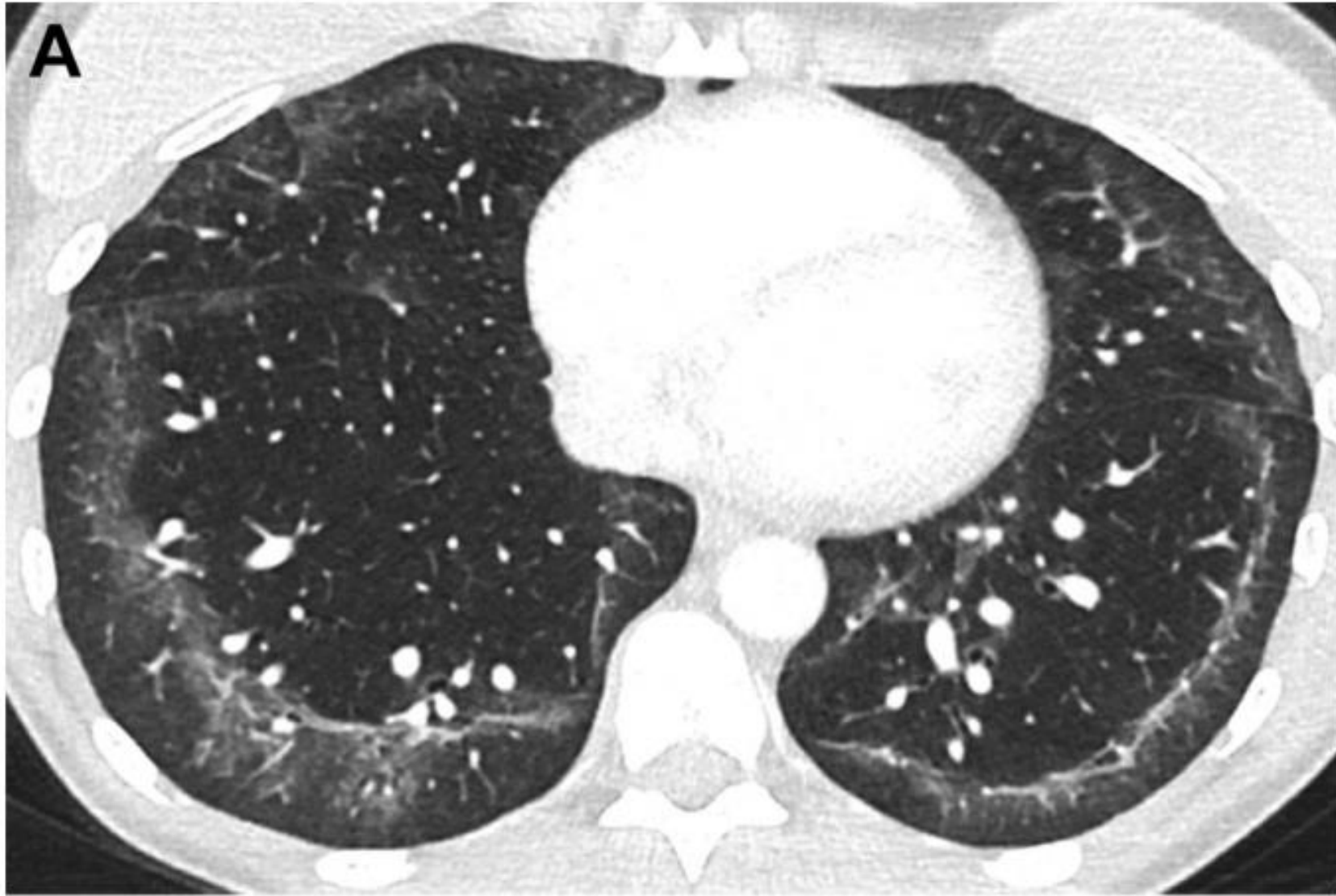
Vaping Associated Lung Injury

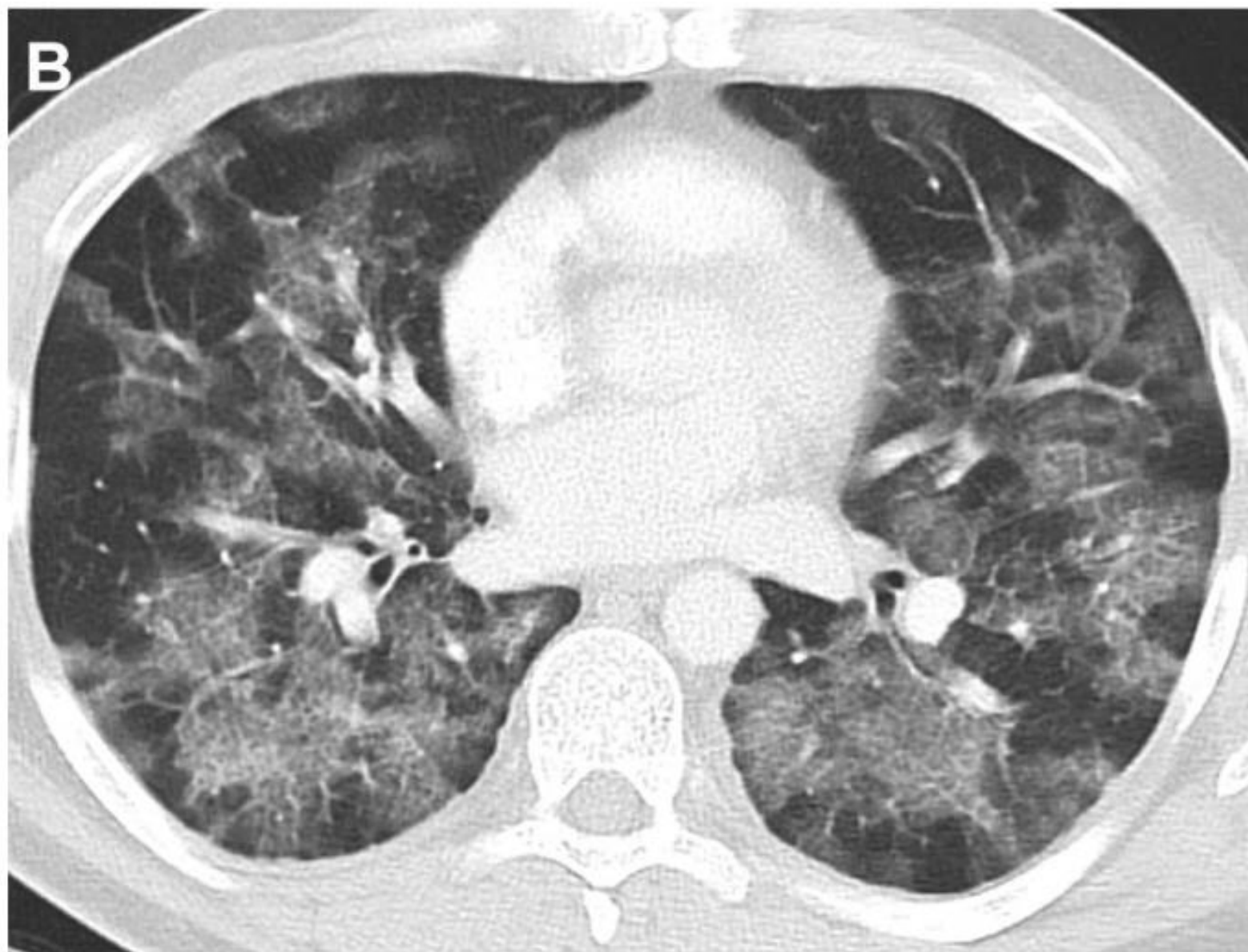
- Symptoms

- Shortness of Breath w/ cough
- Chest Pain
- GI Symptoms (Abd pain, N/V)
- Fever
- Fatigue

- Bloodwork

- Elevated ESR/CRP
- Transaminitis
- Leukocytosis





References

1. Smith ML, Gotway MB, Crotty Alexander LE, Hariri LP. Vaping-related lung injury. *Virchows Arch*. 2021 Jan;478(1):81-88. doi: 10.1007/s00428-020-02943-0. Epub 2020 Oct 27. PMID: 33106908; PMCID: PMC7590536.
2. Cherian SV, Kumar A, Estrada-Y-Martin RM. E-Cigarette or Vaping Product-Associated Lung Injury: A Review. *Am J Med*. 2020 Jun;133(6):657-663. doi: 10.1016/j.amjmed.2020.02.004. Epub 2020 Mar 13. PMID: 32179055.
3. Kligerman SJ, Kay FU, Raptis CA, Henry TS, Sechrist JW, Walker CM, Vargas D, Filev PD, Chung MS, Digumarthy SR, Ropp AM, Mohammed TL, Pope KW, Marquis KM, Chung JH, Kanne JP. CT Findings and Patterns of e-Cigarette or Vaping Product Use-Associated Lung Injury: A Multicenter Cohort of 160 Cases. *Chest*. 2021 Oct;160(4):1492-1511. doi: 10.1016/j.chest.2021.04.054. Epub 2021 May 3. PMID: 33957099; PMCID: PMC8546241.